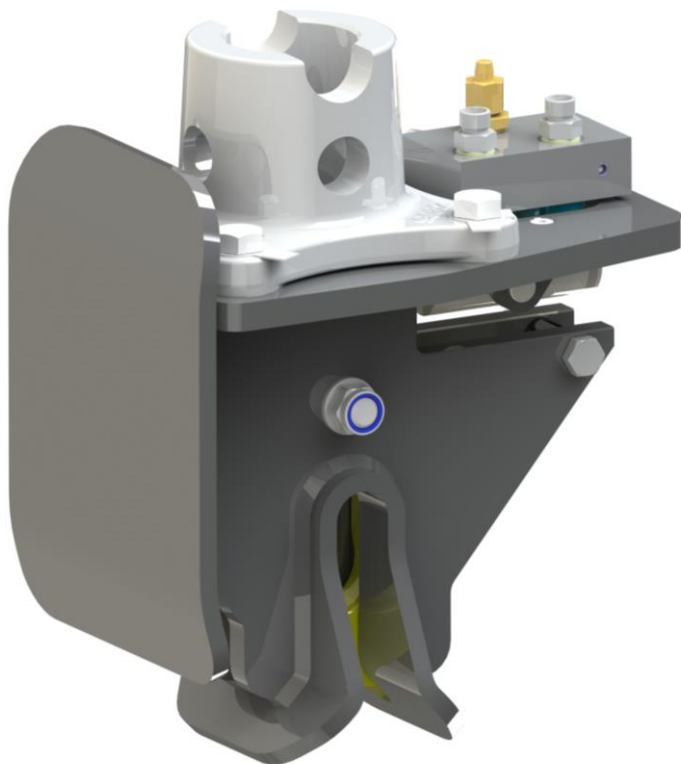




# USERS MANUAL HYDRAULIC HOOK

LHH-4500 BS



Please read this manual carefully before using this product!

## INHOUD

1.	OPERATIONAL CONDITIONS	2
2.	<u>THE ROTATOR</u>	
	2.1 ASSEMBLING/DISMANTLING THE ROTATOR:	3
	2.2 THE HOSES FROM CRANE TO ROTATOR	3
	2.3 THE LINK	3
3.	MAINTENANCE AND REPAIR	4
4.	TECHNICAL DATA	4
	PARTS	5-6

### 1. OPERATIONAL CONDITIONS

This product is a hoisting equipment to load and unload products, and is considered an exchangeable equipment within the scope of the machinery directive 2006/42/EC. Be sure that the machine, of which this hoisting equipment will be part of, meets the appropriate requirements and/or regulations and is well maintained.

#### Notes:

When designing this product, account was taken not only of normal usage but also of usage to be reasonably expected. If the customer modifies the product without the manufacturer's knowledge, the customer (the user) is liable for the consequences and the guarantee becomes null and void.

Maintenance is, of course, permitted, providing it is carried out according to the instructions provided in the manual.

#### Warning:

Ensure that there are no people within working range of this product when it is being used!

## 2 THE ROTATOR:

### 2.1 Assembling/dismantling the rotator:

Place the rotator shaft in the connector plate. Rotate your rotator shaft until the hole in the rotator shaft is in front of the connector bush hole. After this, mount the connector pin and the hairpin spring.

### 2.2 THE HOSES FROM CRANE TO ROTATOR:

The rotator hose connections used for rotation are fitted with throttle valves. You may not use the rotator without these throttle valves.

The hoses from the crane to the rotator used for rotation must be connected to a connection point supplied with a throttle valve.

The hoses from the crane to the rotator must be connected to the two remaining connection points on the rotator.

#### Note:

If it appears that the operation of the rotator does not correspond with the data on your operating handles, then you have probably connected the hoses incorrectly.

### 2.3 THE LINK:

#### Assembly:

A link is always mounted between the rotator and the jib of the crane. Mount the link at the top of the rotator.

Mount the link pin and locking pin.

Check whether the link can move freely. Connect and lock the link to the crane.

Note: Make sure that there is as little sideways slack as possible. If necessary, mount spacers.

### 3. MAINTENANCE AND REPAIR

- Check the LHH visually once a year and it with an 6750 kg load.
- Test the non-return valve once a year to ensure that it is working properly.
- Check the suspension plate every year for slack (maximum 5 mm).
- Check the hydraulic hook every year if the hook is not bent outwards.
- After 20 working hours, check all bolted connections and tighten if necessary.

Caution! With all maintenance activities on the hydraulic hook it must be non-operational.

### TECHNICAL DATA:

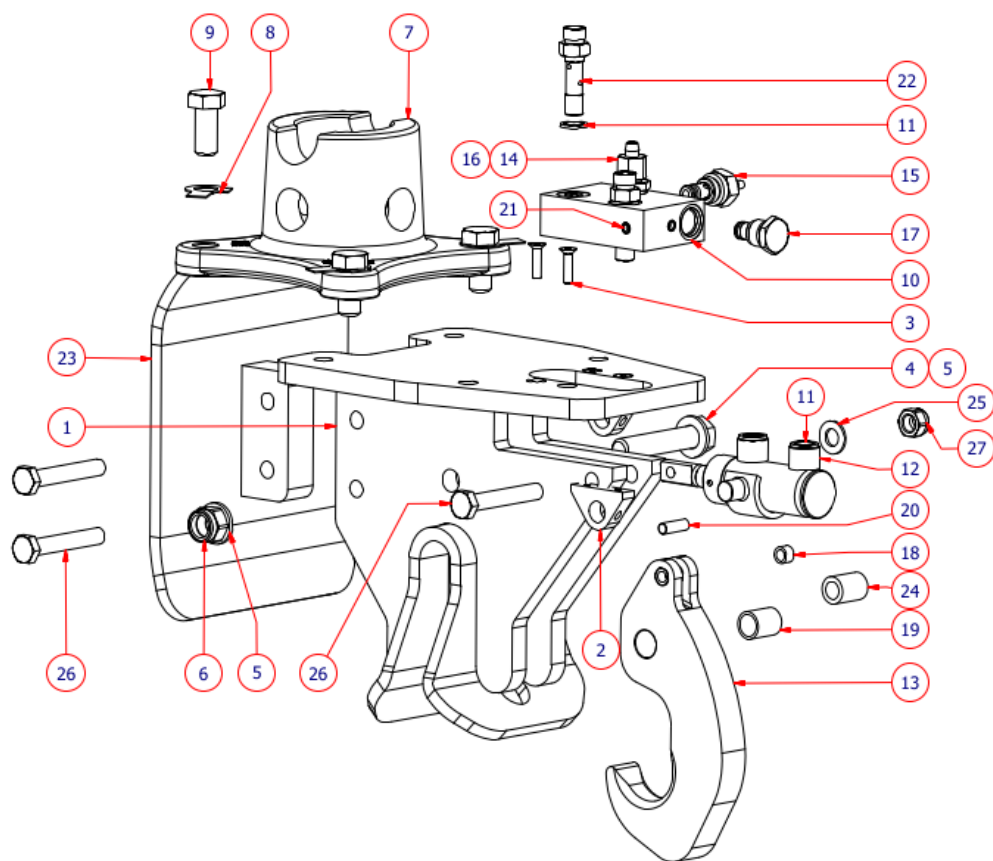
Hydraulic hook : LHH-4500 BS

Weight : 20 kg

Max. hoisting load : 4500 kg

Max. working pressure : 50 Bar

Max. oil flow : 15 L/Min



© 2010 Bakker Hydraulic Products BV  
Nijverheidsweg 6

6662 NG Elst (Gld) The Netherlands

Tel : + 31 481 374757

Fax : + 31 481 375280

Site : [www.bakker-hydraulic.com](http://www.bakker-hydraulic.com)

E-mail : [info@bakker-hydraulic.com](mailto:info@bakker-hydraulic.com)

POS	TYPE	DISCRIPTION	QUANTITY
1	75844	FRAME	1
2	75845	PLATE	2
3	75538	BOLT	4
4	7737	BOLT	1
5	9426	WASHER	2
6	75835	NUT	1
7	9082-XX	SUSPENSION PLATE	1
8	75670-16	LOCK PLATE	4
9	9295	BOLT	4
10	7889	VALVE BLOCK	1
11	7705	JOINT WASHER	4
12	7707	CYLINDER	1
13	75846	HOOK	1
14	75847	NIPPLE	1
15	7698	PRESSURE REGULATING VALVE	1
16	75545	PLUG	1
17	7699	NON-RETURN VALVE	1
18	75839	BEARING BUSH	2
19	75840	BEARING BUSH	1
20	75843	CLEVIS PIN	1
21	75836	SEALING PLUG	2
22	75307	BANJOBOLT 1/4"	2
23	75841	SLIDE PLATE STAINLESS	1
24	75830	BUSHING	1
25	9428	WASHER	3
26	75529	BOLT	3
27	9433	NUT	3