

HYVA[®] CRANE HA 28



MODELS	LIFTING MOMENT	MAX VERTICAL REACH	SLEWING ANGLE	SLEWING TIME	MAX WORKING HEEL	WORKING PRESSURE	CRANE WEIGHT WITHOUT STABILIZERS	OIL TANK CAPACITY	OIL FLOW	DIMENSIONS
	tm	m	°	s/180°	°	bar	kg	l	l/min	mm B x h x S
HA 28 E1	2,75	3,58	335	16	3	160	263	17,5	10	730x1587x440
HA 28 E2	-	4,49	335	16	3	160	295	17,5	10	753x1587x440
HA 28 E3	-	5,39	335	16	3	160	321	17,5	10	753x1587x440

ACCESSORIES

Radio remote control
Oil tank
Supplementary element activation
Winch
Manual extensions
Electro-hydraulic powerpack
Extra cross beams
Tubular base for crane stabilizers (single or double)
Manually opening stabilizers
Manually opening and turning stabilizers
"Green" Oil^{*)}

ACCESSOIRES

Radiocommande
Réserveur huile
Activation élément supplémentaire
Treuil
Rallonges mécaniques
Pompe électro-hydraulique
Béquilles supplémentaires
Traverse stabilisatrice (simple ou double) en profil tubulaire
Stabilisateurs élargissables manuels
Béquilles tournantes à ouverture manuelle
Huile écologique^{*)}



Electro-hydraulic powerpack
Pompe électro-hydraulique
Elektro-hydraulisch Schaltgerät
Central electro-hidráulica

ZUBEHOERE

Funkfernsteuerung
Ölbehälter
Zusätzliche Steuerelemente
Seilwinde
Mechanische Ausleger
Elektro-hydraulisches Schaltgerät
Zusatzabstützungen
Abstütztraverse (einseitig oder beidseitig)
Manuell ausfahrbare Abstützungen
Handöffnung der drehbare Abstützungen
Bio-Öl^{*)}

ACCESORIOS

Comando por rádio
Reservatório de óleo
Ativação de elemento suplementare
Guincho de cabo
Extensões mecânicas
Central electro-hidráulica
Estabilizadores adicionais
Base tubular para estabilizador guindaste (simples ou duplo)
Estabilizadores manualmente estendidos
Estabilizadores giratórios e estendidos manualmente
Óleo ecológico^{*)}

^{*)} Eco-friendly



HYVA[®] CRANE

Hyva Holding B.V.
Antonie van Leeuwenhoekweg 37
2408 AK Alphen aan den Rijn
The Netherlands
Telephone: +31 (0)172 - 42 35 55
Telefax: +31 (0)172 - 42 08 80
info@hyva.com
www.hyva.com
www.hyvacrane.com



DEALER

Data, descriptions and illustrations pertain only and uniquely to models sold at the time of printing of this brochure. After the date of printing, this information is purely indicative and not binding upon HYVA. Future modifications are solely at the discretion of HYVA and are always in compliance with applicable and pertinent safety standards. To obtain updated data, descriptions and illustrations, contact the manufacturer or your reseller. Cranes manufactured and/or marketed by HYVA - Les données, les descriptions et les illustrations se rapportent seulement et exclusivement aux modèles commercialisés à la date d'impression de ce dépliant. Après la date d'impression, ces informations sont simplement indicatives et n'engagent pas HYVA. D'éventuelles modifications sont à la discrétion d'HYVA et toujours dans l'observance des normes de sécurité pertinentes et applicables. Pour obtenir les données, les descriptions et les illustrations actualisées, s'adresser au fabricant ou au revendeur. Grues produites et/ou vendues par HYVA - Daten, Beschreibungen und Abbildungen beziehen sich ausschließlich auf die zum Zeitpunkt des Drucks dieser Broschüre verteilten Modelle. Nach diesem Datum verstehen sich diese Informationen als rein richtungweisend und sind in keinem Fall für HYVA verbindlich. HYVA behält sich vor, nach eigenem Ermessen und in jedem Fall unter Berücksichtigung der zugehörigen und geltenden Sicherheitsvorschriften Änderungen vorzunehmen. Bitte wenden Sie sich für aktuelle Daten, Beschreibungen und Abbildungen an den Hersteller oder Händler. Die Krane werden von HYVA hergestellt und/oder vermarktet. - Os dados, descrições e ilustrações referem-se única e exclusivamente aos modelos comercializados à data da impressão deste folheto. Após a data da impressão, estas informações são meramente indicativas pelas quais a HYVA não se responsabiliza. Eventuais alterações ficam ao critério da HYVA e estão sempre em conformidade com as normas de segurança pertinentes e aplicáveis. Para obter dados, descrições e ilustrações atualizadas, contacte o fabricante ou revendedor. Guindaste produzidos e/ou comercializados pela HYVA.

TRUCK-MOUNTED CRANES HA 28



HYVA[®] CRANE

www.hyva.com

HYVA[®] CRANE HA 28



- Load limiting device (CE)
- Hexagonal section extensions
- Designed in accordance with: EN12999-DIN15018
- Fatigue test classification: B3
- Flanged valve
- Assembly kit
- Control panel with customizable position
- ABS protective cover on controls
- Worm and gear rotation
- Fittings SAE-JIC
- Sliding pads on telescopic extensions
- Self-lubricating bushings
- Independent telescopic cylinders
- Light indicator for correct stabilizer stowing (CE)
- Mechanical rotation limitation (CE)
- Swivel stabilizer foot
- Proportional pressure transducer on main cylinder (CE)
- Sensor for correct stowing of the crane (CE)
- 90%-100% light visible from all around the crane (CE) (only with radio remote control)



- Limiteur de moment (CE)
- Extensions à section hexagonale
- Projet en accords aux normes: EN12999-DIN15018
- Essai de fatigue avec classification: B3
- Vanne bridée
- Kit de brides de fixation
- Panneau de commandes à positionner selon la demande
- Enveloppe de protection commande en ABS
- Rotation par vis sans fin
- Tujauterie SAE-JIC
- Patins de coulissement sûr les éléments télescopiques
- Douilles autolubrifiantes
- Vérins hydrauliques indépendants
- Kit capteurs de replies de béquilles stabilisatrices (CE)
- Limitation mécanique de la rotation (CE)
- Plat d'appui béquilles avec joint à rotule
- Capteur de pression proportionnel sur le vérin de levage (CE)
- Capteur de position "grue repliée" (CE)
- Colonne tricolore indiquant le statut de charge (90%-100%) visible de tous les côtés de la grue (CE) (seulement avec radio)

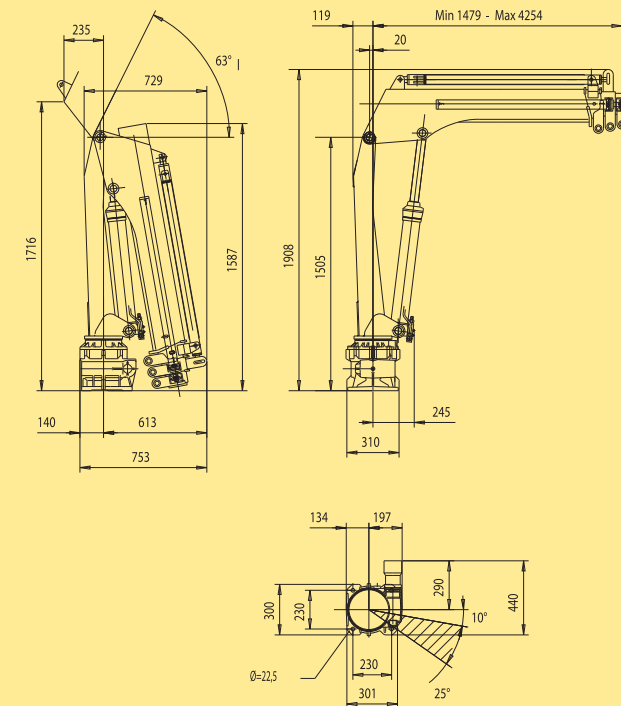


- Momentbegrenzer (CE)
- Sechskantige Ausschübe
- Berechnungsnorm nach EN12999-DIN15018
- Ermüdungstest in Klasse: B3
- Ventil mit Flansch
- Befestigungsteile
- Bedienungslage nach Wunsch
- Bedienungsschutz durch ABS
- Drehung durch Schnecke
- Anschlüsse SAE-JIC
- Gleitschuhe auf den Ausschüben
- Selbstschmierende Buchsen
- Unabhängige hydraulische Heber
- Warnleuchte für Abstützungen (CE)
- Mechanischer Schwenkbegrenzer (CE)
- Gelenkstützsteller
- Proportionaler Druckwandler am Hauptzylinder (CE)
- Sensor für die korrekte Zusammenfaltung des Kranes (CE)
- Licht 90%-100% sichtbar von allen Seiten des Kranes (CE) (nur mit Funkfernsteuerung)



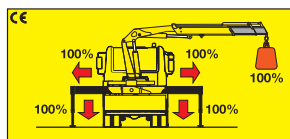
- Válvula limitadora de momento de carga (CE)
- Extensões sextavadas
- Norma do projeto: EN12999-DIN15018
- Tipo de ensaio de fadiga: B3
- Válvula flangeada
- Kit de montagem
- Painel de comando posicionado conforme pedido
- Caixa de proteção dos comandos em ABS
- Sistema de giro infinito
- Conexões SAE-JIC
- Calços deslizantes em extensões telescópicas
- Buchas auto-lubrificantes
- Cilindros de extensão independentes
- LED indicador de recolhimento correcto de estabilizador (CE)
- Limitador mecânico de giro (CE)
- Plataforma de patolamento articulada
- Transdutor de pressão no cilindro de elevação (CE)
- Indicador luminoso de recolhimento correcto de guindaste (CE)
- Indicação luminosa 90%-100% visível de todos os lados do guindaste (CE) (somente com comando por rádio)

Model	kg	m	kg	m	kg	m	kg	m
HA28 E1	2085	1.32	1220	2.25	830	3.24	610	4.24
HA28 E2	1960	1.39	1160	2.32	820	3.24	610	4.24
HA28 E3	1855	1.46	1105	2.39	780	3.31	605	4.24
					465	5.19		



Stability control systems (CE)

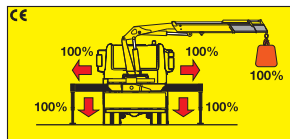
HM System



The **HM System** integrated in the load limiting device checks the stabilizers' positions. Only when all beams are fully open and all stabilizers are on the ground the crane can operate and lift loads.



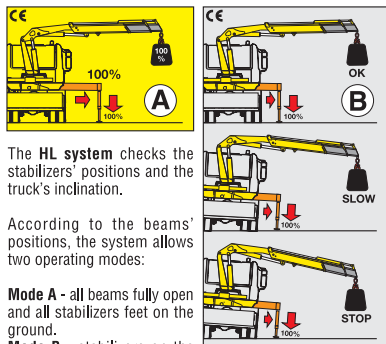
HML System



The **HML System** integrated in the load limiting device checks the stabilizers' positions. Only when all beams are fully open and all stabilizers are on the ground the crane can operate and lift loads.



HL System



In **mode A**: the load limiting device stops the crane when the crane reaches 100% of the nominal capacity.
In **mode B**: a dedicated sensor monitors the truck's inclination. The load limiting device stops the crane before it reaches an inclination angle dangerous for stability, or when the crane reaches its nominal capacity.



According to the beams' positions, the system allows two operating modes:

Mode A - all beams fully open and all stabilizers feet on the ground.
Mode B - stabilizers on the ground only.



HA28 X



- Compact dimensions and reduced weight
- Proportional speed control of any single movement
- Stabilizer control by radio

- Thanks to their extremely compact dimensions all cranes in the HA series are projected to be mounted on small equipment such as: car trailer, tracked vehicle, pickup, small trucks and stationary mounting;
- Control panel with customised position in order to always have the more ergonomic position;
- Hexagonal extensions with sliding pads allow to always have rigid and aligned boom.