



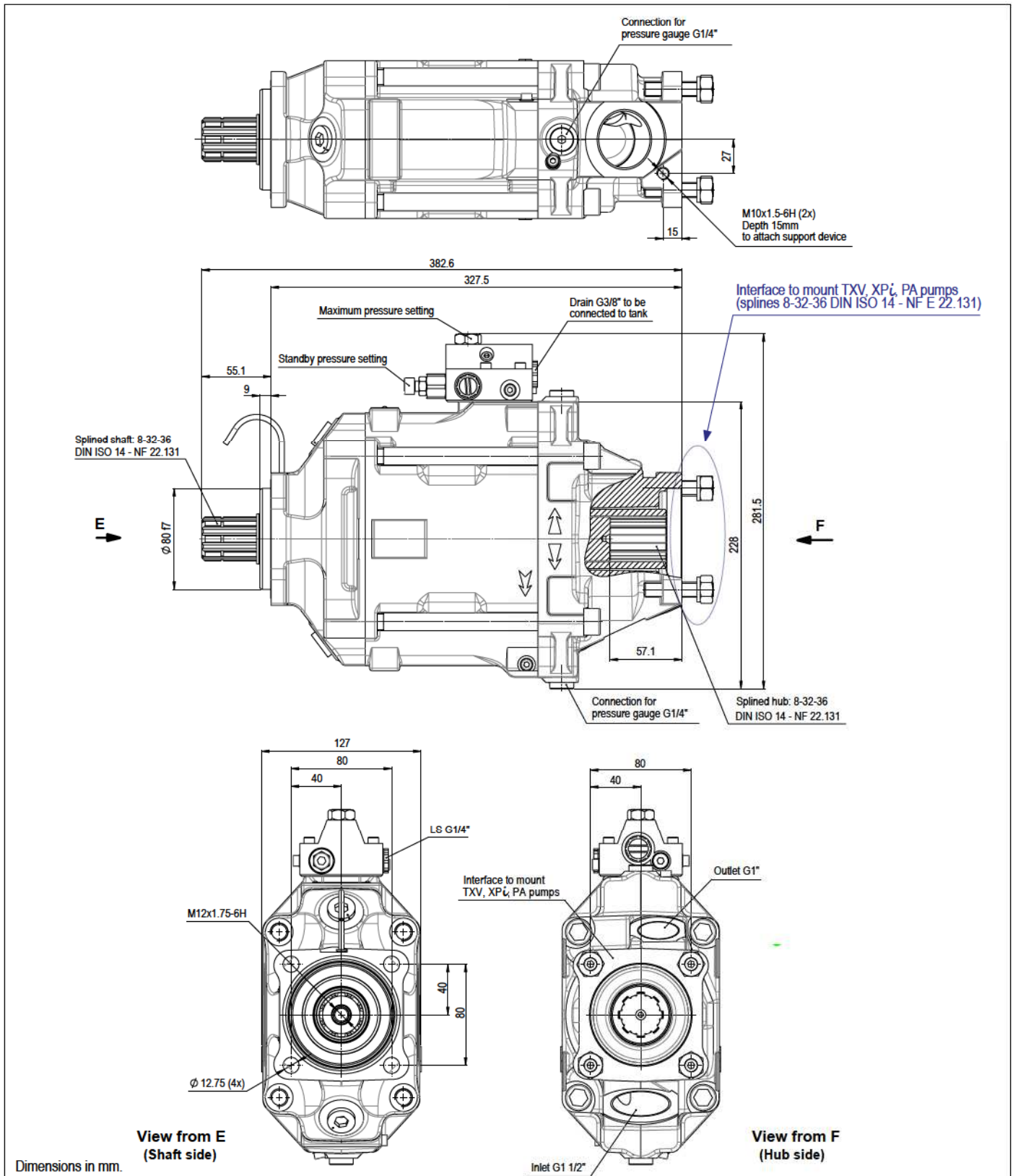
TXV 130 WITH THROUGH SHAFT PUMP

The TXV 130 pump exists in a "through shaft" version.

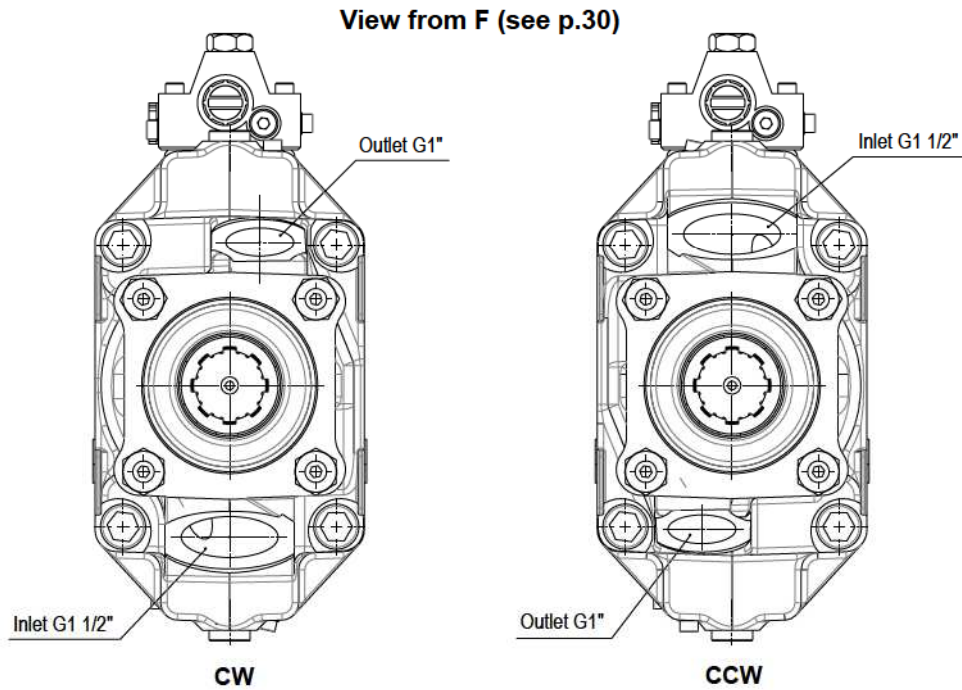
With side porting for inlet and output, this "through shaft" TXV 130 configuration means any LEDUC TXV pump, or fixed displacement XP $\dot{\iota}$ or PA pump, can be mounted on the back.

The maximum displacement of the "through shaft" TXV 130 can be factory set, on request, between 60 and 130 cc/rev.

It is important to check that maximum torque to be transmitted by the shaft of the "through shaft" TXV 130 does not exceed 900 N.m.

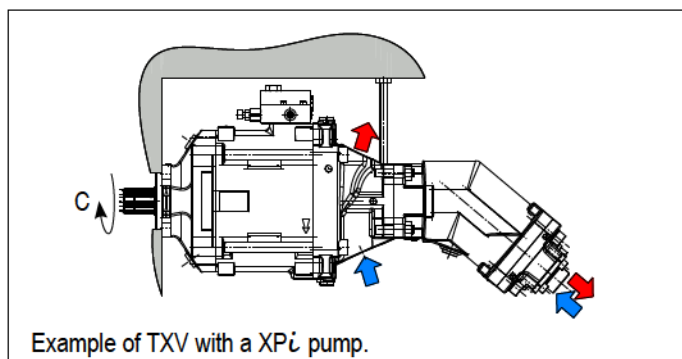
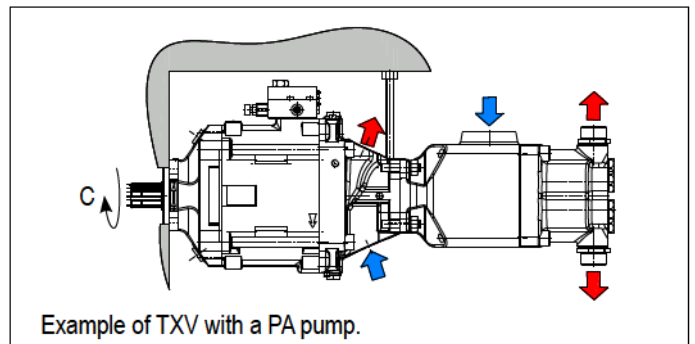
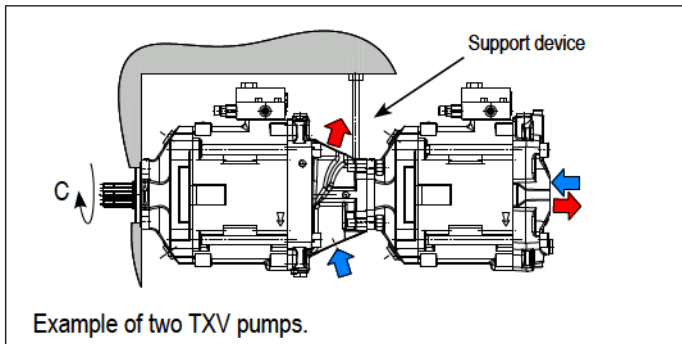


TXV 130 WITH THROUGH SHAFT PUMP



► **Support device**

The support device for the pump must be fixed to the same part which the pump is mounted on (see diagram below) and has to be designed to avoid strain on the pump flange.



Maximum torque transferable by the shaft of the pump driven by the PTO:

$$C = 900 \text{ N.m}$$

That is, the sum of torque for both pumps must be < 900 N.m.

Please consult our Technical Department for advice regarding your installations.